

WCIF COLOCALISATION PLUGINS

Colocalisation Test

Background

When a coefficient is calculated for two images, it is often unclear quite what this means, in particular for intermediate values. This raises the following question: how does this value compare with what would be expected by chance alone?

There are several approaches that can be used to compare an observed coefficient with the coefficients of randomly generated images. Van Steensel (1) adopted an approach where the observed colocalisation between channel 1 and channel 2 was compared to colocalisation between channel 1 and a number of channel 2 images that had been translated (i.e. displaced by a number of pixels) in increments along the image's X-axis. Fay et al (2) extended this approach by translating channel 2 in 5-pixel increments along the X- and Y-axis (i.e., -10, -5, 0, 5, and 10) and ± 1 slices in the Z-axis. This results in 74 randomisations (plus one original channel 2). The observed correlation was compared to these 74 and considered significant if it was greater than 95% of them.

Costes et al (3) subsequently adopted a different approach, based on "scrambling" channel 2. The original channel 1 image was compared to 200 "scrambled" channel 2 images; the observed correlations between channel 1 and channel 2 were considered significant if they were greater than 95% of the correlations between channel 1 and scrambled channel 2s.

Costes' scrambled images were generated by randomly rearranging blocks of the channel-2 image. The size of these blocks was chosen to equal the point spread function (PSF) of the image.

An approximation of Costes' approach is used by Bitplane's *Imaris* and also the *Colocalisation Test* plugin. For *Imaris*, a white noise image is smoothed with a Gaussian filter the width of the image's PSF. The *Colocalisation Test* plugin generates a randomized image by taking random pixels from the channel-2 image; it then smoothes the image with a Gaussian filter, which is again the width of the image's PSF.

The Colocalisation Test plugin calculates Pearson's correlation coefficient for the two selected channels (R_{obs}) and compares this to Pearson's coefficients for channel 1 against a number of randomized channel-2 images (R_{rand}).

Using the Plugin

ROI or Mask

Select the ROI you wish to analyze. You can choose "None," "ROI in channel 1," or "ROI in channel 2." If an ROI is selected, but one is not present, then no ROI will be used. Alternatively, an image can be selected as a mask. Only pixels in channel 1 and channel 2 that correspond to a non-zero value in the mask will be included in the calculations.

Randomization Method

The options here are either "Fay (translation)" or "Costes (smoothed noise)" or "van Steensel (x-translation)". If "Costes" is selected, a second dialog will open after the first is "okayed"; this allows the user to define the PSF width and whether pixels are randomized in the Z-axis also.

Ignore zero-zero pixels

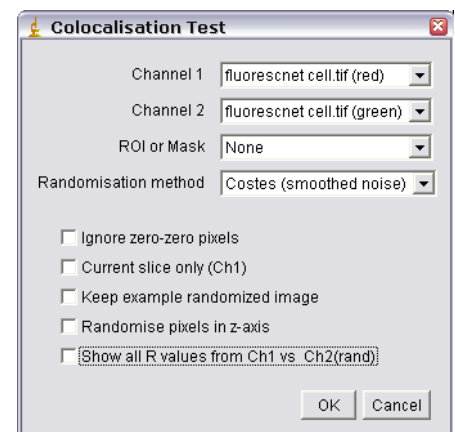
If this is checked, then pixels with a value of zero in both channels will be ignored as background. Checking this option generates values that more closely resemble those generated by *Imaris* (with no mask).

Current Slice only (Ch1)

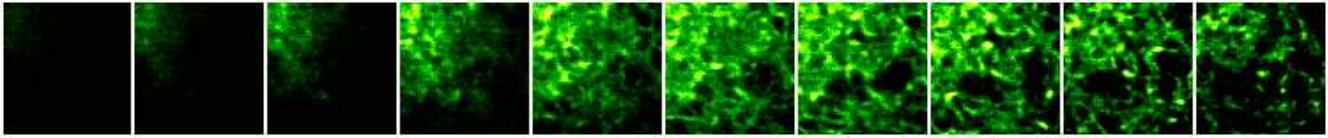
If you choose two stacks, but wish only to analyze the current slice, selecting this option will compare the current slice of channel 1 with its corresponding slice in channel 2.

Keep example randomized image

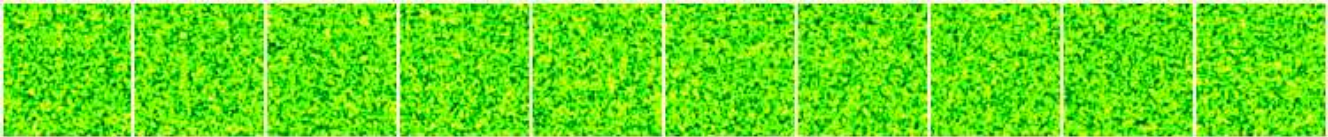
Select this if you wish to keep a single example of a randomized image (or a stack if it a stack analysis).



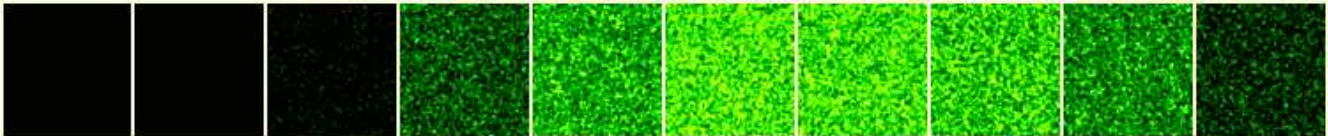
Montage of z-slices from a raw channel 2 image (ER-GFP expressing HeLa cell)



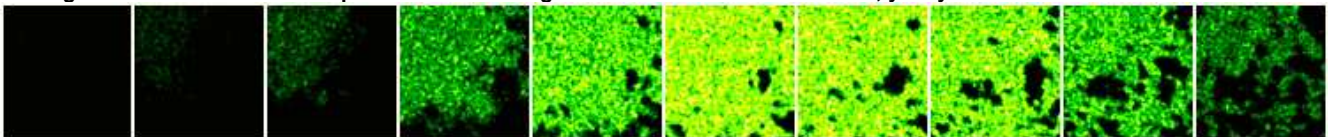
Montage of z-slices from an example randomized image that has been randomized in x, y AND z.



Montage of z-slices from an example randomized image that has been randomized in x, y only.



Montage of z-slices from an example randomized image that has been randomized in x, y only and with ch2 selected as a mask.



Randomising in the z-axis generates data that is more consistent with that of *Imaris*. For example: ER-Mito.tif (red) and ER-Mito.tif (green)

Randomisation of Ch2	R(obs)	R(rand) mean±sd	%(Ro>Rr)	Iterations	Randomisation	PSF width
Costes X, Y,Z	0.357	0.002±0.003	100%	10	Costes X, Y, Z	0.514 µm
Costes X, Y	0.357	0.477±0.001	0%	10	Costes X, Y	0.514 µm
Imaris	0.357		1.00			0.514 µm

PSF details

If you have opted for Coste's method of randomization, a second dialog will appear.

Randomize pixels in z-axis

For a single slice image this option does nothing. For stacks randomized with Costes' approach this option will activate randomization in z as well as in x and y. When this is unchecked, random pixels are taken from a channel 2 slice and put in the same slice in the randomized channel 2 images. If this option is checked, the minimum and maximum pixel intensities in the stack are calculated, and random values in this range are added to each slice.

Pixel Size (µm)

Enter the pixel size here. If the image is properly calibrated then the dialog pulls the correct value from the image.

Channel wavelength (nm)

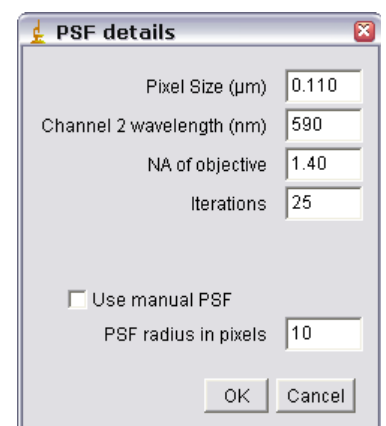
Enter the central emission wavelength of channel 2. This is typically an approximation; for traditional "red-dyes" this will be about 590 nm.

NA of objective

Enter the numerical aperture of the objective used to acquire the image

Iterations

Enter the number of randomizations you wish to perform. The higher this number is the more accurate the data, but it will also take longer to calculate. This is an especially important factor to consider in stack analysis.



Manual PSF

The above information (pixel size, wavelength, NA) is used to calculate the appropriate size for the Gaussian filter. You can override this, or if you do not know the appropriate settings then check the “Use Manual PSF” option and enter the PSF radius in pixels. **Note:** entering a value too small may result in positive colocalisation where there is none. See Costes’ supplemental material (3).

Results

Data generated with the following options: No ROI; Costes Randomization; Randomized in X and Y only.

Filename	R _{obs}	Imaris R	R _{rand} (mean±sd)	R _{obs} >R _{rand}	Imaris P	Iterations	Randomization	PSF width
BBB_rgb	0.002	0.002	0.002±0.004	54%	0.602	10	Costes	0.505 µm (5 pix.)
Biofilm.lsm	0.801	0.801	0.001±0.001	100%	1.00	10	Costes	0.544 µm (3 pix.)
fluorescent cells	0.363	0.363	-0.001±0.002	100%	1.00	10	Costes	0.884 µm (1 pix.)
Nestin_GFP.tif	0.256	0.256	-0.000±0.000	100%	1.00	10	Costes	0.884 µm (1 pix.)
Syntaxin RGB	0.617	0.617	0.005±0.014	100%	1.00	10	Costes	0.505 µm (5 pix.)
ER Mito stack	0.398	0.398	0.464±0.001	0%	1.00	10	Costes	0.505 µm (5 pix.)
ER Mito Z-Projection	0.048	0.048	0.012±0.020	100%	1.00	10	Costes	0.505 µm (5 pix.)

Colocalisation Thresholds

Background

This performs analysis based on the approach of Costes et al (3). Implementations of this approach can also be found in Bitplane's *Imaris* and NIH's *MIPAV* software.

The function of this approach is to determine automatically a threshold for each channel. Pixels below this threshold are ignored for the purposes of the colocalisation quantification.

The threshold is determined in two stages. First, an orthogonal regression is performed on the image's scatterplot. Then, a threshold is stepped down along this regressed line. Pixels below this threshold are included in the calculation of Pearson's coefficient. When Pearson's coefficient equals zero, the threshold for subsequent calculations has been found.

Using the Plugin

Show Colocalised Pixels

This results in the generation of a new greyscale image including only the colocalised pixels (i.e., in which both channel 1 and channel 2 are above their respective thresholds).

Use constant intensity for colocalised pixels

This option allows the image of colocalised pixels to be white; otherwise the pixel intensity will equal $\sqrt{(Ch1 \times Ch2)}$.

Show Scatterplot

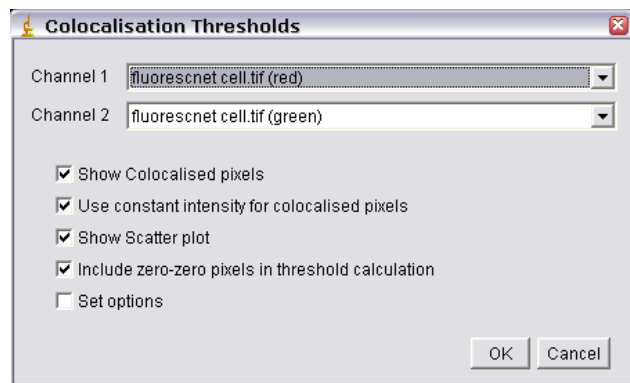
This will generate a scatterplot (channel 1 along the x-axis; channel 2 along the y-axis) with both the linear regression line as well as the thresholds marked.

Include zero-zero pixels in threshold calculation

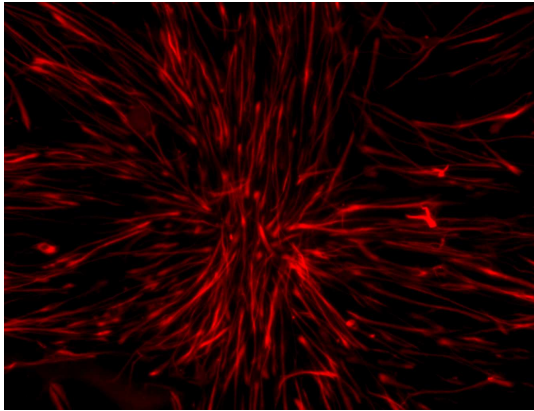
This option allows inclusion/exclusion of zero-zero pixels in the calculation of the thresholds. Including the zero-zero pixels results in calculated thresholds similar to *Imaris*; excluding them generates thresholds similar to those determined by *MIPAV*.

Set Options

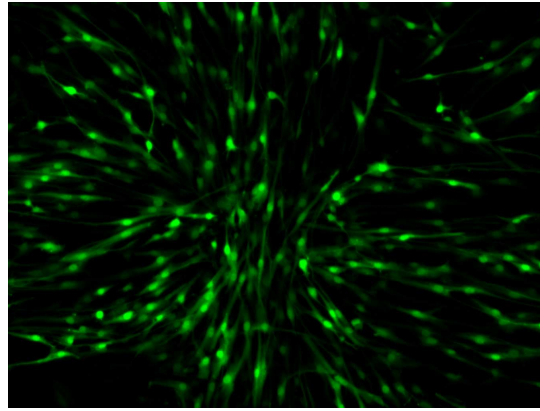
When clicked, this option activates the *Results Options* dialog (see below), and allows you to choose results are reported. By default, all results are reported. (The plugin should remember your preferences.) Other options can be easily added; contact [Tony Collins](#) for help with this.



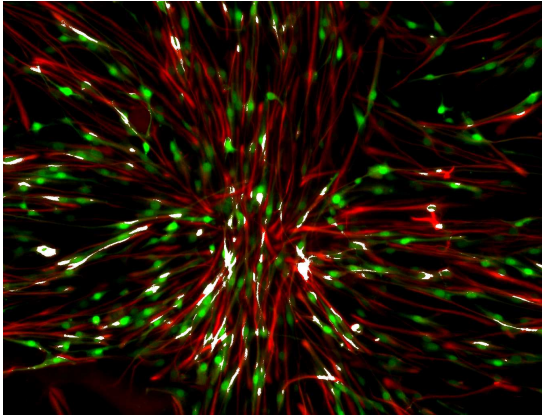
Channel 1



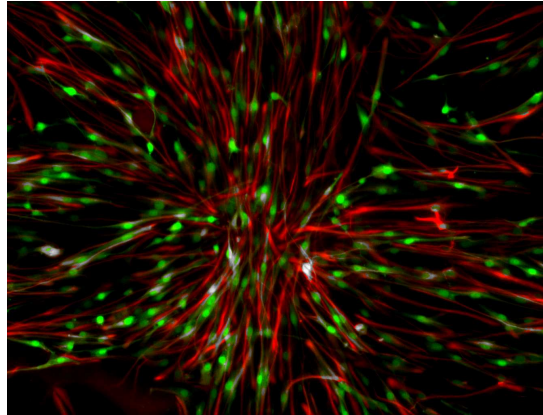
Channel 2



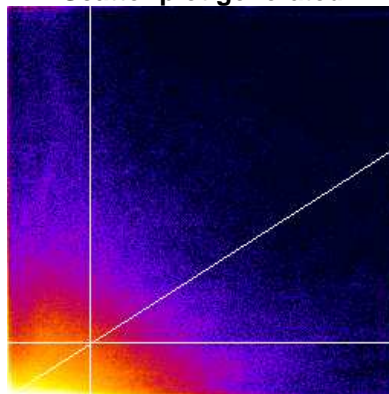
Colocalisation Image: Constant Intensity



Colocalisation Image: Variable Intensity



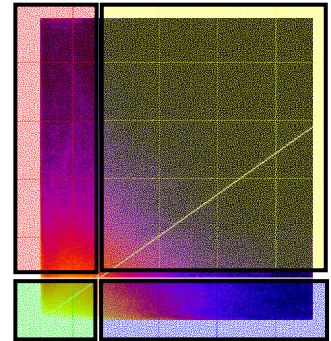
Scatter plot generated



Results Options

The scatterplot generated can be thought of as consisting of four quadrants (shown in the scatter plot diagram as red, green, blue, and yellow).

Red quadrant = $(Ch2 > Ch2 \text{ threshold}) \& (Ch1 < Ch1 \text{ threshold})$ = Ch2 above; Ch1 below;
 Green quadrant = $(Ch2 < Ch2 \text{ threshold}) \& (Ch1 < Ch1 \text{ threshold})$ = Ch1 below; Ch2 below;
 Blue quadrant = $(Ch2 < Ch2 \text{ threshold}) \& (Ch1 > Ch1 \text{ threshold})$ = Ch1 above; Ch2 below;
 Yellow quadrant = $(Ch2 > Ch2 \text{ threshold}) \& (Ch1 > Ch1 \text{ threshold})$ = Ch1 above; Ch2 above;



Show Linear Regression Solution – *m*; *b*

Returns the result of the orthogonal regression: $Ch2 = (Ch1 * m) + b$.

Show thresholds – *Ch1 thresh*; *Ch2 thresh*

Returns each threshold. Pixels below this threshold have a Pearson's correlation coefficient of ~ zero. (Red + Green + Blue areas in Scatterplot 1).

Pearson's for Whole image – *Rtotal*

Returns Pearson's correlation coefficient for all the non zero-zero pixels in the image (ignores regression options).

Pearson's for image above thresholds – *Rcoloc*

Returns Pearson's correlation coefficient for pixels where both Ch1 and Ch2 are above their respective threshold (yellow area in Scatterplot 1).

Pearson's for image below thresholds – *Ch1 thresh*; *Ch2 thresh*

Returns Pearson's correlation coefficient for pixels where either Ch1 or Ch2 are below their respective threshold (i.e., the Red + Green + Blue areas in Scatterplot 1). This indicates how well a threshold has been set. This value should be close to zero.

Mander's Original coefficient – *M1*; *M2*

This generates a value for each channel. These are the colocalisation coefficients as described originally by Manders et al (4). These coefficients do not set a threshold other than "greater than zero."

Mander's using thresholds – *tM1*; *tM2*

This generates a value for each channel. This is a modification of Mander's original formula, except the thresholds that have been calculated are used.

Number of colocalised voxels – *Ncoloc*

This is the number of voxels which have both channel1 and channel 2 intensities above threshold (i.e., the number of pixels in the yellow area of the scatterplot).

%Image volume colocalised – *%Volume*

This is the percentage of voxels which have both channel 1 and channel 2 intensities above threshold, expressed as a percentage of the total number of pixels in the image (including zero-zero pixels); in other words, the number of pixels in the scatterplot's yellow area ÷ total number of pixels in the scatter plot (the Red + Green + Blue + Yellow areas).

%Voxels Colocalised – *%Ch1 Vol*; *%Ch2 Vol*

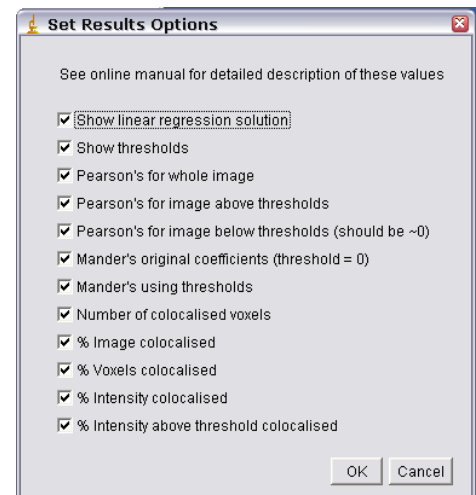
This generates a value for each channel. This is the number of voxels for each channel which have both channel 1 and channel 2 intensities above threshold, expressed as a percentage of the total number of voxels for each channel above their respective thresholds; in other words, for channel 1 (along the x-axis), this equals the (the number of pixels in the Yellow area) ÷ (the number of pixels in the Blue + Yellow areas). For channel 2 this is calculated as follows: (the number of pixels in the Yellow area) ÷ (the number of pixels in the Red + Yellow areas).

%Intensity Colocalised – *%Ch1 Int*; *%Ch2 Int*

This generates a value for each channel. For channel 1, this value is equal to the sum of the pixel intensities, with intensities above both channel 1 and channel 2 thresholds expressed as a percentage of the sum of all channel 1 intensities; in other words, it is calculated as follows: (the sum of channel 1 pixel intensities in the Yellow area) ÷ (the sum of channel 1 pixels intensities in the Red + Green + Blue + Yellow areas).

%Intensities above threshold colocalised – *%Ch1 Int > thresh*; *%Ch2 Int > thresh*

This generates a value for each channel. For channel 1, this value is equal to the sum of the pixel intensities with intensities above both channel 1 and channel 2 thresholds expressed as a percentage of the sum of all channel 1 intensities above the



threshold for channel 1. In other words, it is calculated as follows: (the sum of channel 1 pixel intensities in the Yellow area) ÷ (sum of channel 1 pixels intensities in the Blue + Yellow area)

Sample Results

Image	Software	%Vol	%Ch1	%Ch2	ThreshCh1	ThreshCh2
BBB_rgb	MIPAV	No threshold determined				
	Imaris	0.0	2.4	0.4	252	7
	ImageJ (excl. 00*)	0.0	0	0	255	7
	ImageJ (incl. 00)	0.0	0	0	255	7
Biofilm	MIPAV	41.6	99.7	81.5	2	26
	Imaris	45.0	99.8	84.4	1	21
	ImageJ (excl. 00)	40.2	99.4	75.3	3	26
	ImageJ (incl. 00)	40.2	99.4	75.3	3	26
Fluorescent cells**	MIPAV	7.9	33.2	36.1	74	51
	Imaris	56.1	83.9	98.3	11	5
	ImageJ (excl. 00)	6.8	16.2	22.5	77	51
	ImageJ (incl. 00)	53.3	79.7	96.7	13	6
Nestin_GFP	MIPAV	5.2	32.4	30.3	63	39
	Imaris	14.9	47.3	53.9	36	23
	ImageJ (excl. 00)	5.5	18.6	21.0	61	38
	ImageJ (incl. 00)	13.0	34.4	40.5	38	24
ER-Mito Z-series	MIPAV	8.8	44.3	39.4	15.3	20
	Imaris	22.8	66.1	59.6	8	10
	ImageJ (excl. 00)	8.2	39.5	37.6	15	20
	ImageJ (incl. 00)	18.1	62.1	53.8	9	12
Syntaxin RGB	MIPAV	51.4	91.9	92.7	11	8
	Imaris	60.0	92.8	95.1	9	6
	ImageJ (excl. 00)	50.7	84.3	90.1	11	8
	ImageJ (incl. 00)	53.3	86.1	91.4	10	6

* Including (incl. 00) or excluding (excl. 00) zero-zero pixel pairs for calculation of the thresholds.

** There is considerable background in this image. See ImageJ sample “File/Open Samples/Fluorescent Cells”.

Users of *Imaris* are encouraged to use a third channel mask in their analysis: this would, in effect, exclude zero-zero pixels. For the purposes of the comparison above, no mask channel was used with *Imaris* or *ImageJ*. Below is a table of results using the mask option of *ImageJ* and *Imaris* for the Nestin_GFP example image.

File	Software	Mask	Ch1 Threshold	Ch2 Threshold
Nestin_GFP	Imaris	Ch1	76	46
	ImageJ	Ch1	77	47
	Imaris	Ch2	60	41
	ImageJ	Ch2	61	42

Reference List

- (1) van Steensel B, van Binnendijk EP, Hornsby CD et al. Partial colocalization of glucocorticoid and mineralocorticoid receptors in discrete compartments in nuclei of rat hippocampus neurons. *J Cell Sci* 1996; 109(4):787-792.
- (2) Fay FS, Taneja KL, Shenoy S, Lifshitz L, Singer RH. Quantitative Digital Analysis of Diffuse and Concentrated Nuclear Distributions of Nascent Transcripts, SC35 and Poly(A)*1. *Experimental Cell Research* 1997; 231(1):27-37.
- (3) Costes SV, Daelemans D, Cho EH, Dobbin Z, Pavlakis G, Lockett S. Automatic and Quantitative Measurement of Protein-Protein Colocalization in Live Cells. *Biophys J* 2004; 86(6):3993-4003.
- (4) Manders E, Verbeek FJ, Aten JA. Measurement of co-localisation of objects in dual-colour confocal images. *Journal of Microscopy* 1993; 169:375-382.
- (5) Li Q, Lau A, Morris TJ, Guo L, Fordyce CB, Stanley EF. A Syntaxin 1, G α o, and N-Type Calcium Channel Complex at a Presynaptic Nerve Terminal: Analysis by Quantitative Immunocolocalization. *J Neurosci* 2004; 24(16):4070-4081.